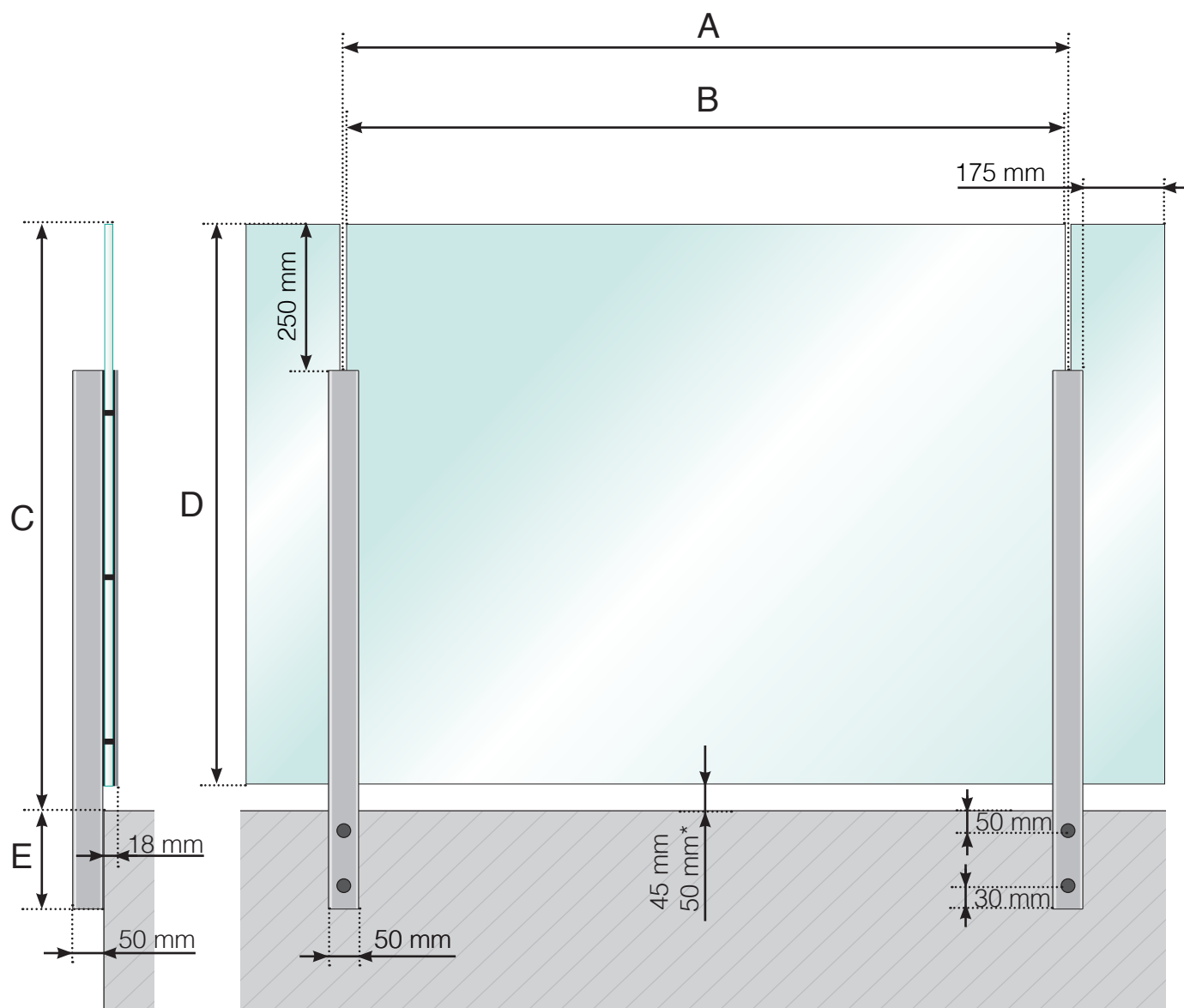


DETAILED MEASUREMENTS

ALUMINIUM RAILING EXTERIOR MOUNTED - STANDARD HEIGHT POST



A - The c/c dimensions of the posts depend on the length of the sides and number of sections

B - The width of the glass depends on the length of the sides and the number of sections

C - Total height of the railing

D - Glass height

E - 145, 195, 250 or 350 mm

* - Only when $A \geq 1300$ mm.

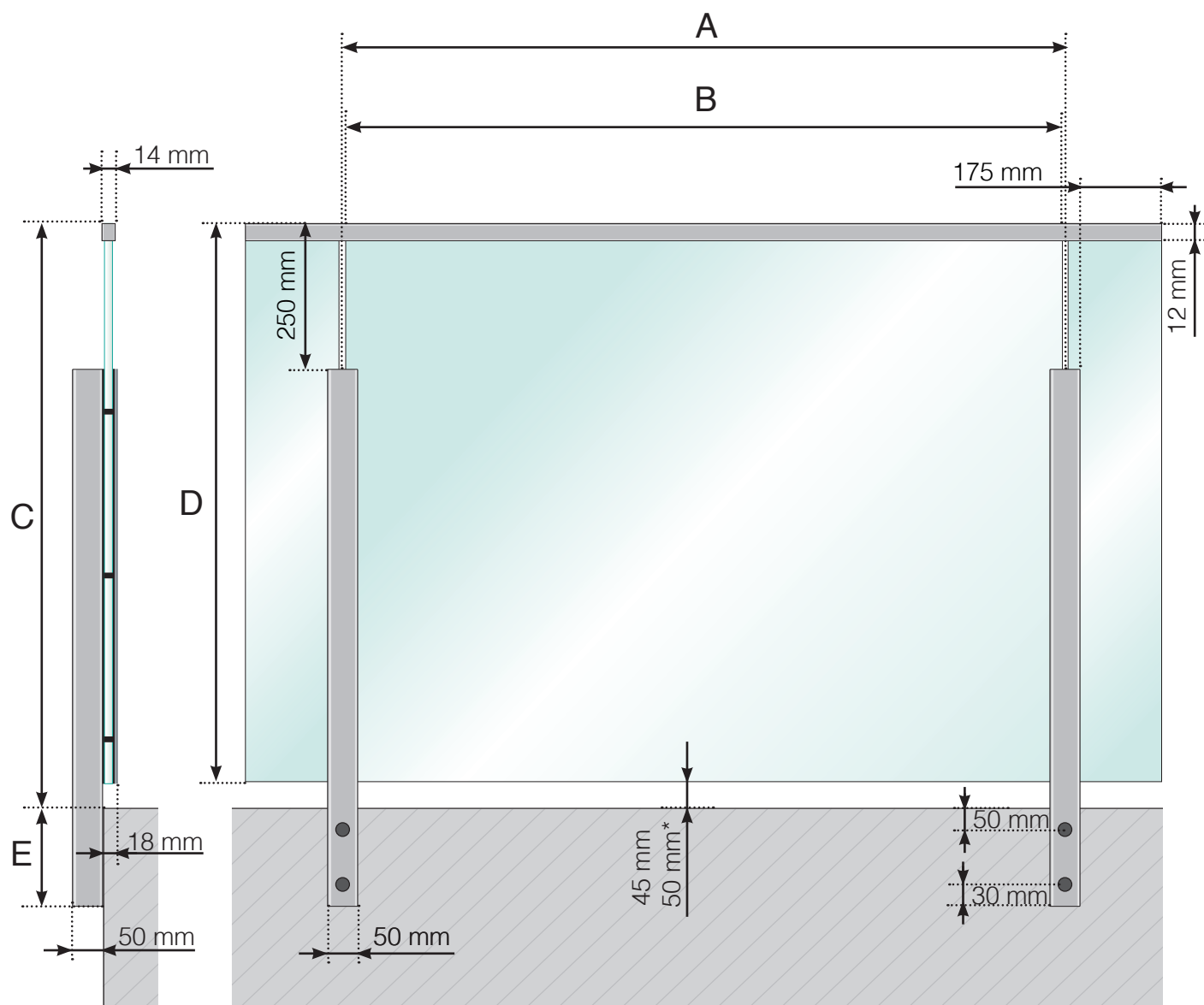
Please note that the drawings are not to scale

© Räckesbutiken Sweden AB - www.balustradestore.eu

2018-11-01 v.1.0

DETAILED MEASUREMENTS

ALUMINIUM RAILING EXTERIOR MOUNTED - STANDARD HEIGHT POST ALUMINUM GLASS STRIP



A - The c/c dimensions of the posts depend on the length of the sides and number of sections

B - The width of the glass depends on the length of the sides and the number of sections

C - Total height of the railing

D - Glass height

E - 145, 195, 250 or 350 mm

* - Only when $A \geq 1300$ mm.

Please note that the drawings are not to scale

© Räckesbutiken Sweden AB - www.balustradestore.eu

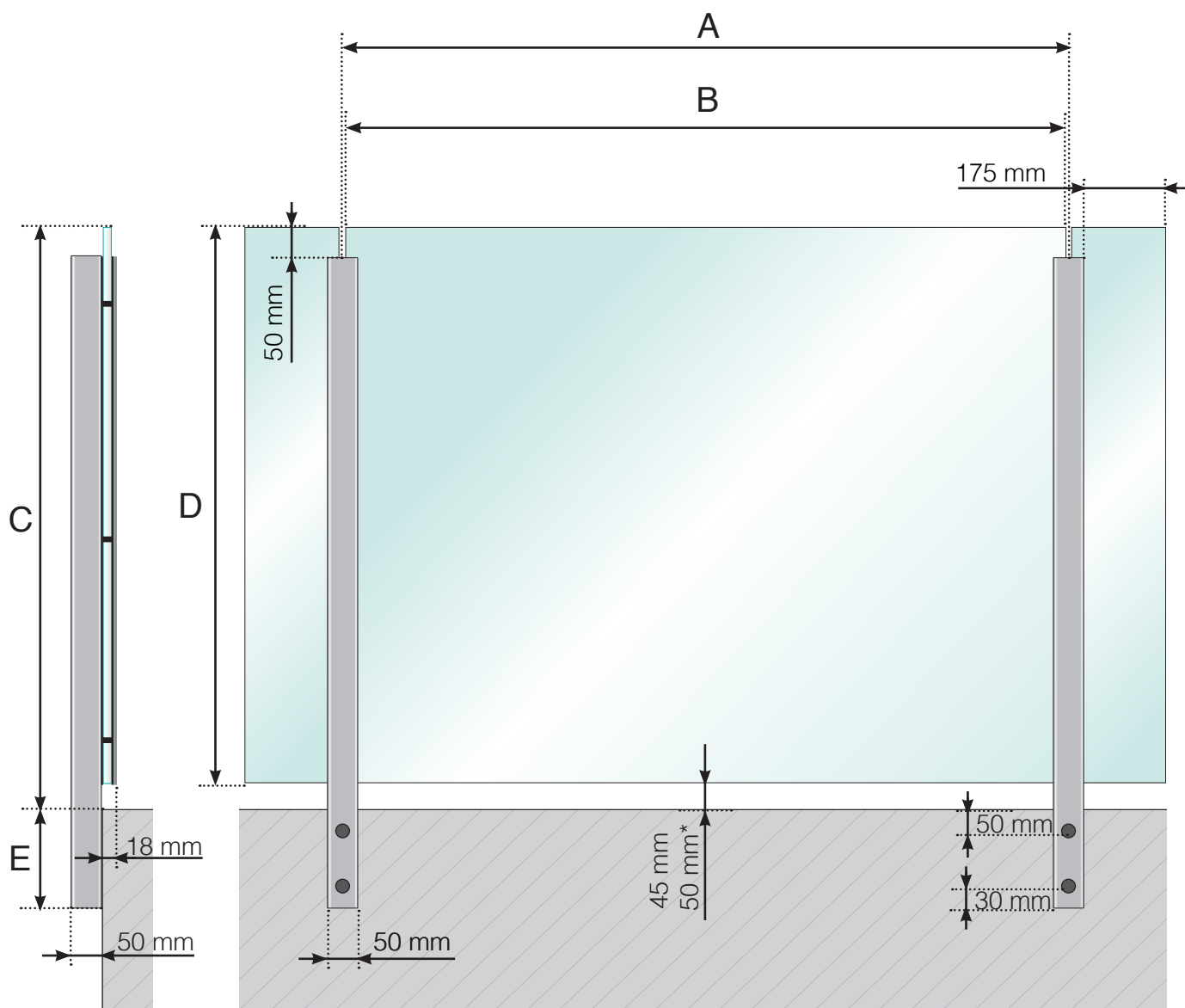
2022-10-10 v.1.0



BALUSTRADESTORE.EU

DETAILED MEASUREMENTS

ALUMINIUM RAILING EXTERIOR - HIGH POST



A - The c/c dimensions of the posts depend on the length of the sides and number of sections

B - The width of the glass depends on the length of the sides and the number of sections

C - The height of the railing from the floor surface

D - Glass height

E - 145, 195, 250 or 350 mm

* - Only when $A \geq 1300$ mm.

Please note that the drawings are not to scale

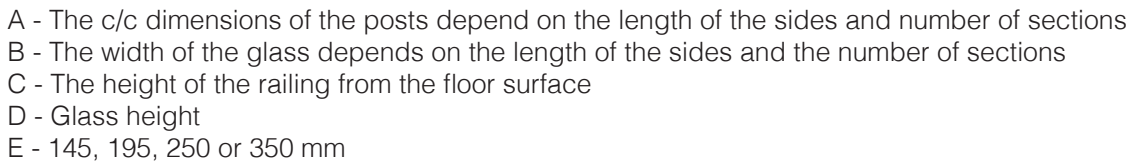
© Räckesbutiken Sweden AB - www.balustradestore.eu

2022-10-10 v.1.0



BALUSTRADESTORE.EU

ALUMINIUM RAILING EXTERIOR - HIGH POST
ALUMINUM GLASS STRIP



BALUSTRADESTORE.EU